

SE1_BB_表

DENSO

WIRELESS SCANNER

NEW> **SE1** SERIES



2D code model
SE1-QB



Barcode model
SE1-BB



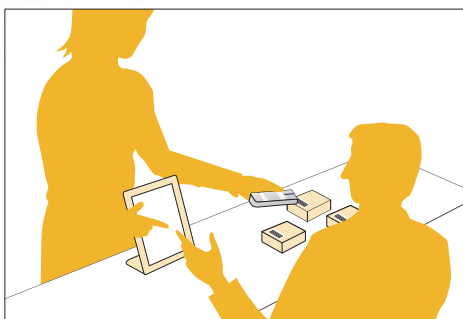
Data entry to smart devices is now easier, quicker and more accurate!



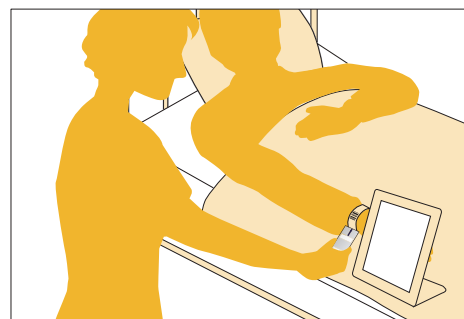
iOS Android Windows® supported!



Simplifies POS use at stores



For route salespersons



Helps prevent medical errors in hospitals

Feature 1

Long operation

This scanner can be operated for a long time, reducing operating costs. Even if suddenly out of battery power, there's no need to worry; this scanner is battery-powered.



Feature 2

Supports LCD scanning

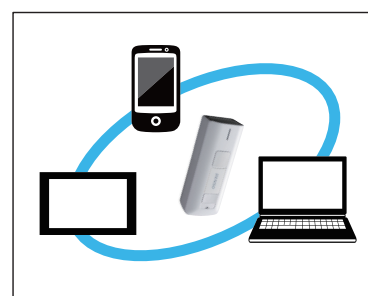
Scanning codes displayed on a smartphone or other device is also supported.



Feature 3

Connects to all detected Bluetooth® devices

No complicated settings required. Do settings by just scanning the connection code.



SE1 series specifications

			2D code model	Barcode model
Type			SE1-QB	SE1-BB
Scanner			Area sensor	Advanced scan plus (CCD)
Mode	Readable codes	2D code	QR code, micro QR code, iQR, SORC, PDF417, DataMatrix (ECC200), Aztec, GS1 Composite (EAN, UCC Composite), Maxi Code	—
		Barcode	EAN-13/8, JAN-13/8, UPC-A/E, UPC/EAN (with add-on), Interleaved 2 of 5 (ITF), CODABAR (NW-7), Standard 2 of 5 (STF), CODE39, CODE93, CODE128, GS1-128 (EAN-128), GS1 DataBar (RSS)	EAN-13/8, JAN-13/8, UPC-A/E, UPC/EAN (with add-on), Interleaved 2 of 5 (ITF), CODABAR (NW-7), CODE32, CODE39, CODE93, CODE128, GS1-128 (EAN-128), GS1 DataBar (RSS), Standard 2 of 5 (STF), MSI, Plessey
	Minimum resolution	2D code	0.167 mm	—
		Barcode	—	0.125 mm
	PCS value	0.3 min.		±50°
Angle			Confirmation LED (blue, red), Buzzer	
Scanning confirmation			Bluetooth ver. 2.1 + EDR-based class 2	
Communication interface			SPP, HID	
Power			Alkaline AA battery x 2 or AA Eneloop® battery x 2	
Operating time*1			50 hours	100 hours
Environment requirements			IPX2	
Drop impact resistance*2			1.2 m high over a concrete floor with 6 times	
Operating temperature			-5~50°C	
Weight			Approx. 60 g (not including batteries)	

*1: With one reading pass over a 5 s period.

*2: These are test values, but not guaranteed values.

Product configuration

Accessories

- Scanner
- Operation Guide (with code menu for settings)
- * Batteries are not included.

Software

- Setting software (Scan Tune App)
- Software application to prepare parameter setting codes for SE1 series on PC.
- * Downloadable via QBDirect.

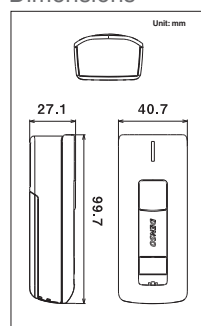
Option (sold separately)

- Neck strap (NSBHT-500)
- Hand strap (HSSE1)

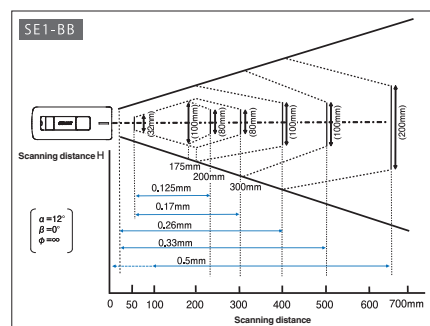
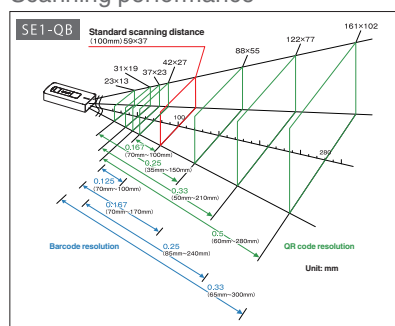
Silicone cover

- Silicone cover common to SE1-BB and -QB (Clear)
- Silicone cover common to SE1-BB and -QB (Black)

Dimensions



Scanning performance



To use this product safely

- Before using this product, please read its User's Manual thoroughly for correct use.

For more information, please visit our website
<http://www.denso-wave.com/en/adcd/>



QR Code is registered trademark of DENSO WAVE INCORPORATED.
 ● Appearance and specifications are subject to change without prior notice. ● Description stated in this catalogue is as of July, 2014.